



ABOUT



Welcome to Landmark Estates, a 62+ community of detached, single-family condominium homes nestled into the heart of picturesque Pelham, NH. Conveniently located just minutes from the New Hampshire and Massachusetts border, Landmark Estates is just minutes to

shopping and major commuting routes. Offering 42 home sites and five floor plans, residents at Landmark Estates will enjoy a care-free, low maintenance lifestyle. These quality-built homes will surround a central clubhouse for residents to enjoy gathering and socializing.

LANDMARK ESTATES CONDOMINIUMS

GPS Directions:
185 Windham Road, Pelham, NH

From Route 3, take the Route 3A S exit toward in Hudson toward Tyngsborough, Mass. Turn left onto Dracut Road, follow for 2 miles. Turn left onto Sherburne Road; follow to the end and turn left onto NH 128 (Mammoth Road). Bear right onto Route 111A (Marsh Road). At the traffic circle, take the second exit onto 111A and stay straight for approximately 1 mile to the Landmark Estates entrance on left.

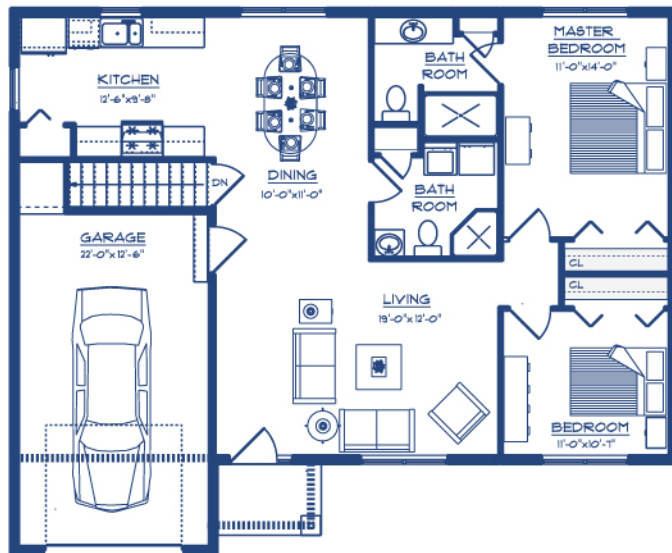
*Sitemap is not to scale.

COLONIAL



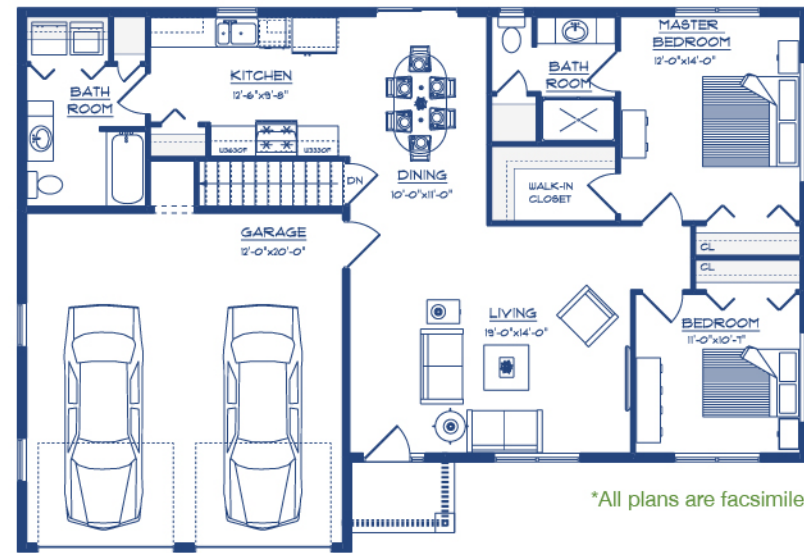
1075 sq. ft.

1 Car Garage . 2 Bedrooms . 2 Bathrooms



1236 sq. ft.

2 Car Garage . 2 Bedrooms . 2 Bathrooms



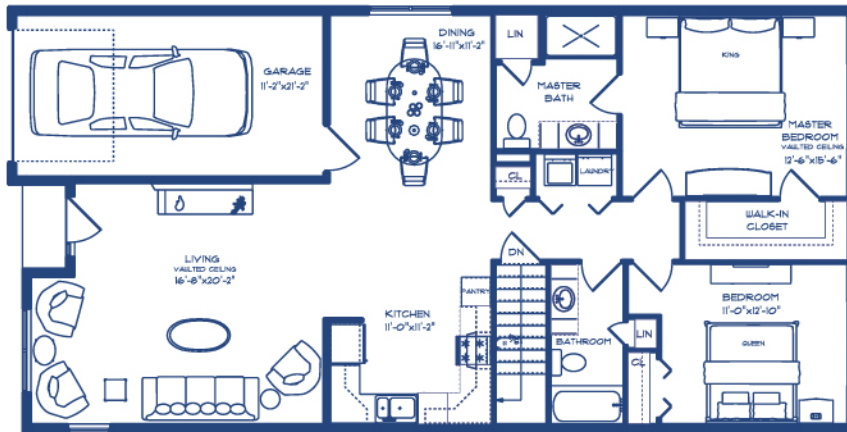
*All plans are facsimile

CRESTWOOD



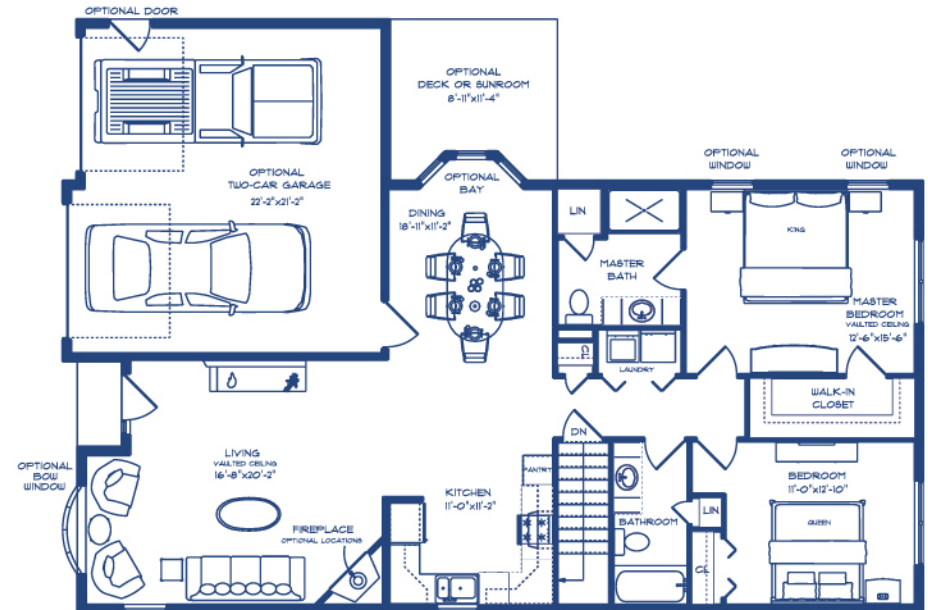
1415 sq. ft.

1 Car Garage . 2 Bedrooms . 2 Bathrooms



1427 sq. ft.

2 Car Garage . 2 Bedrooms . 2 Bathrooms



*All plans are facsimile

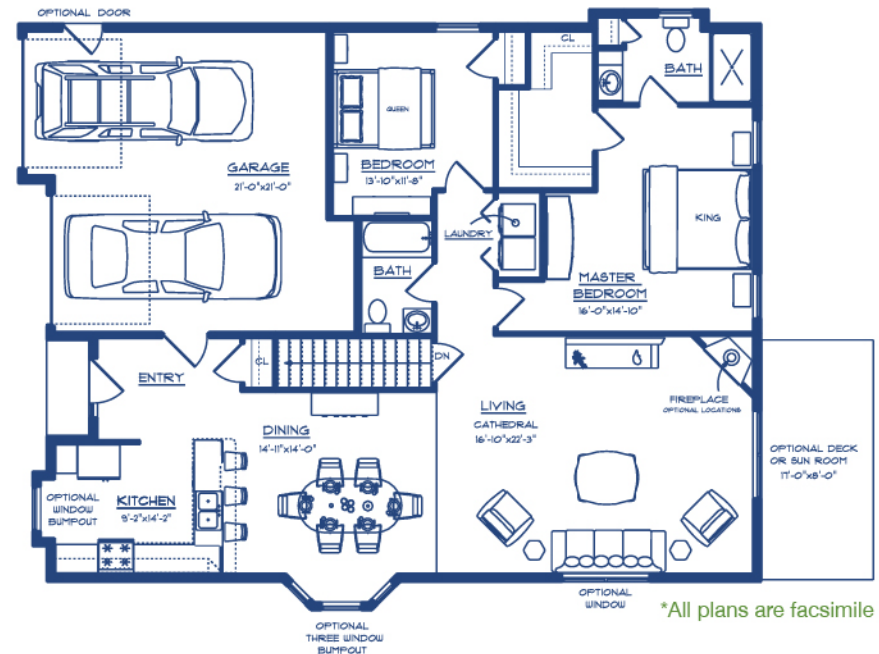
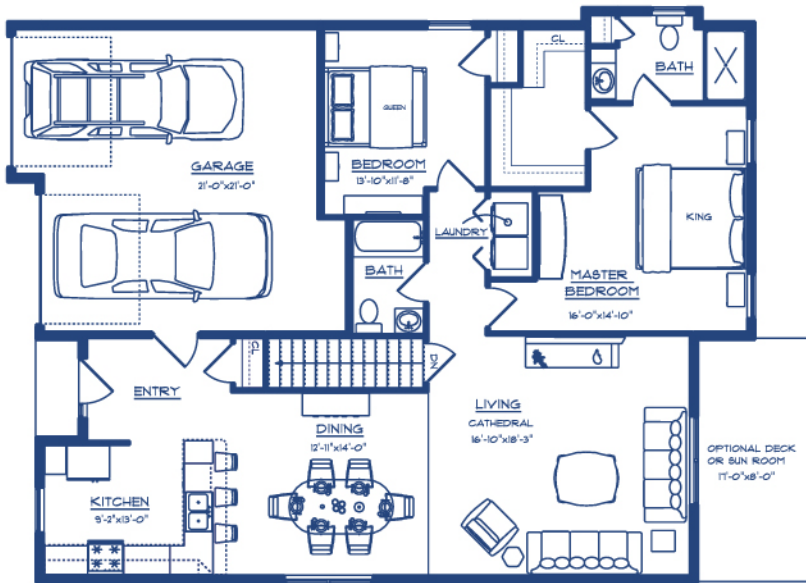


CASTLETON

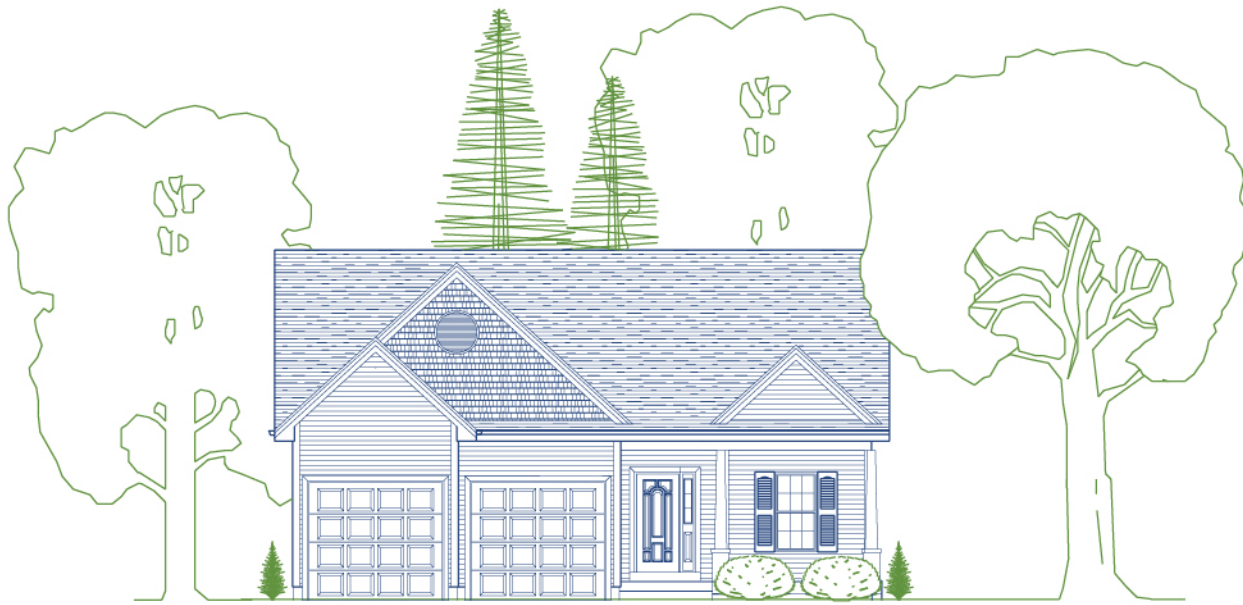
- Single Story
- 2 Bedrooms
- 2 Bathrooms
- 2 Car Garage

Castleton . 1449 sq. ft.

Castleton Extension . 1535 sq. ft.



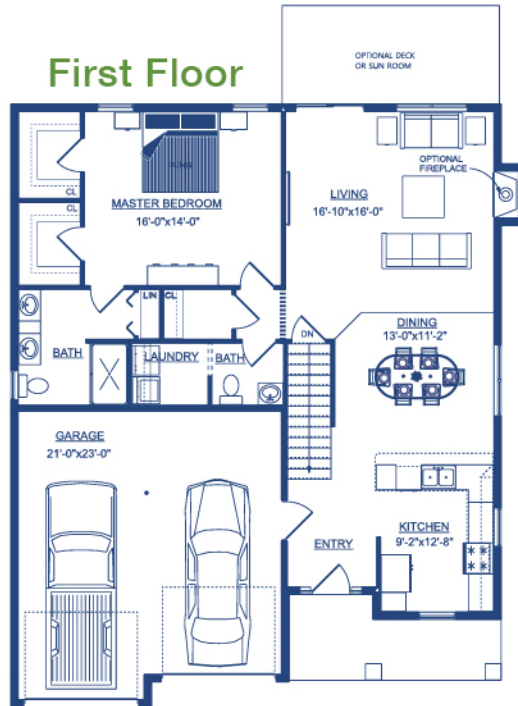
*All plans are facsimile



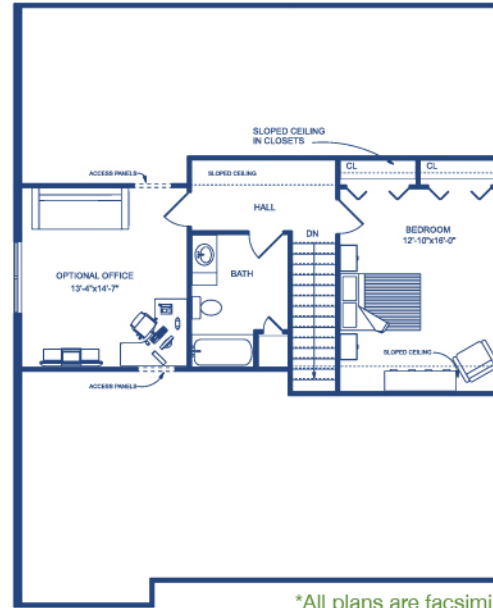
APPLETON

- 1928 sq. ft.
- 2 Bedrooms
- Office
- 2.5 Bathrooms
- 2 Car Garage

First Floor



Second Floor



*All plans are facsimile

— LANDMARK ESTATES —

C O N D O M I N I U M S

Another Quality Petersen Built Homes Community

Landmark Estates is being developed by Jim Petersen, Jr. of Petersen Built Homes. Jim has been in the construction industry for more than 20 years and was in the real estate industry prior to moving into construction. Petersen Built Homes develops properties primarily in Southern N.H. This is Petersen Built Homes third age-restricted community in Pelham. His first two communities, Paradise Estates and Long Pond Woods, are sold out.

For more information, please visit our website at www.LandmarkEstatesNH.com

Exclusive Agent
Melanie Norcross
REALTOR®, NH & MA

603.560.3858



kw
KELLERWILLIAMS.

603.883.8400